

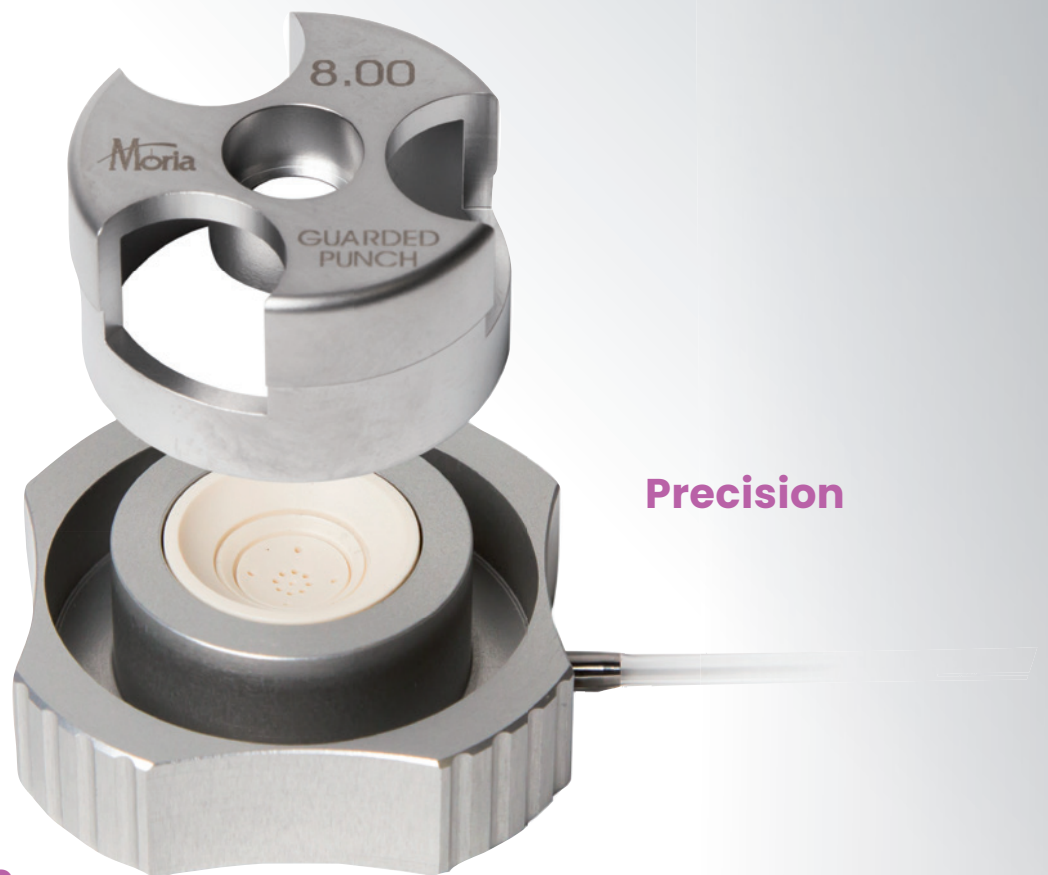
Moria



Deep Well Guarded Punch

Secure your DMEK graft preparation
with MORIA technology

Control



Precision

Ergonomic

SECURE YOUR DMEK GRAFT PREPARATION WITH MORIA TECHNOLOGY

Moria, your partner for a controlled DMEK graft preparation

DMEK procedures are increasingly performed, becoming a preferred endothelial keratoplasty among surgeons¹. However, the complexity of this technique has so far required a high learning curve². Aware about this difficulty, Moria has developed a punch to help you to standardize this procedure.

This punch has a stable and ergonomic base to ensure a precise and secure gesture in an optimized working comfort. The well is deep, enveloping and has a double aspiration system. It has been designed to guarantee a secure holding of the donor cornea to ensure a meticulous and accurate incision. Finally, the guarded blade technology developed by Moria facilitates the cleavage plane identification to avoid the tear of the graft and to preserve its endothelial cells. Thus, this Deep Well Guarded Punch is your ideal ally for a controlled and reproducible DMEK graft preparation.

Deep Well Guarded Punch: designed to fit your needs

You do...

Final sizing only

Peripheral scoring + final sizing

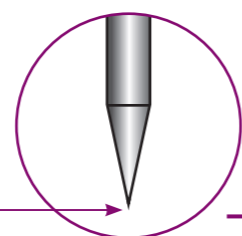
You need...



THE DEEP WELL GUARDED PUNCH

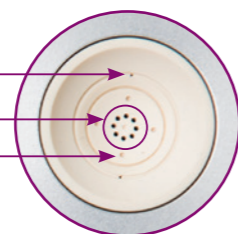
PRECISION

- Double bevelled blade for a **precise incision**
- 360° guarded blade top for a **uniform depth incision**



EFFICIENT HOLDING OF THE CORNEA

Homogenic suction system with a double aspiration system for a **secured holding of the cornea**



PROPER "S" STAMPING

4 fixed cardinal hole locations to assist with **proper "S" stamp placement**, while facilitating hinge on stromal plug

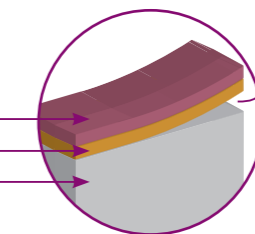
ERGONOMIC

Shallow base for **working with comfort** under microscope

STABILITY

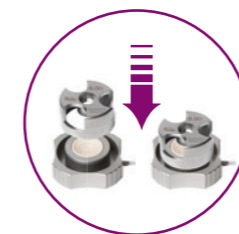
Large & stable base with finger prints designed for **optimal grasping**

Endothelium
Descemet
Stroma



CONTROL

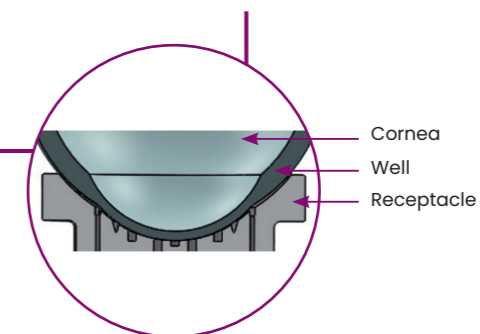
Guarded blade **to facilitate the cleavage plane identification**
Stainless steel bladed top and aluminum base for a **smooth and controlled punch**



Large visualization windows for **more visibility**

GOOD POSITIONING OF THE CORNEA

8.5-mm centering groove for **precise cornea positioning when sizing**. Deep and double curved well enabling the cornea to lie in **its most natural position and maintain its stability**



DEEP WELL GUARDED PUNCH REFERENCES

- Complete guarded punch with base, bladed top and syringe

Complete Deep Well Guarded Punch - Single Use	
References	Sizing diameter
For graft sizing	
17212D750	7.5 mm
17212D775	7.75 mm
17212D800	8 mm
17212D825	8.25 mm
17212D850	8.5 mm
For peripheral scoring	
17212D950	9.5 mm
17212D1000	10 mm



- Stand-alone bladed top for peripheral scoring

Stand-alone bladed top - Single Use	
References	Sizing diameter
17213D950	9.5 mm
17213D1000	10 mm



BIBLIOGRAPHY

1. Rodríguez-Calvo-de-Mora M. Clinical Outcome of 500 Consecutive Cases Undergoing Descemet's Membrane Endothelial Keratoplasty. *Ophthalmology*. **2015**;122(3):464-470
2. Debellemanière G. & al. Impact of Surgical Learning Curve in Descemet Membrane Endothelial Keratoplasty on Visual Acuity Gain. *Cornea*. **2016**;36(1):1-6



MORIA #67081EIN-B-04.2024

MORIA SA
27, rue du Pied de Fourche
03160 Bourbon L'Archambault
FRANCE
Phone: +33 (0)1 46 74 46 74
Fax: +33 (0)1 46 74 46 00
moria@moria-int.com
www.moria-surgical.com

MORIA Inc
1050 Cross Keys Drive
Doylestown, PA 18902
USA
Phone: (800) 441 1314
Fax: +1 (215) 230 7670
orders@moriausa.com
www.moria-surgical.com

Moria

Moria Japan K.K.
Arcadia Building 6F
1-12-3 Kanda
SudachoChiyoda-Ku
Tokyo 101-0041
JAPAN
Phone: 81-3-6260-8309
Fax: 81-3-6260-8310
moria@moriajapan.com
www.moriajapan.com

Moria COMMERCIAL (CHINA) CO., LTD.
上海目利亚贸易有限公司
Room H 6F Kaili Building NO.432
West Huai Hai Road, Changning district, Shanghai, 200052, P.R.C
中国上海市长宁区淮海西路432号凯利大厦6楼08室
Phone/Fax: +86 021 52586095
moriachina@moria-int.com