

# Corneal Transplant

*One Use-Plus*  
Automated DSAEK

DSAЕК  
One step further ...



*One Use*  
DSAЕК

... in the procedure of choice  
for corneal transplantation

# DSAEK

Step by step example of a DSAEK procedure

## Donor Cornea Preparation



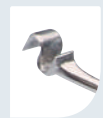
### Lamellar dissection



A donor cornea with a minimum of 16 mm and maximum of 19 mm scleral rim is placed onto the Moria reusable Artificial Chamber (#19161-19162) or the Single-Use Artificial Chamber (#19182).



An anterior lamellar cap is removed from the posterior portion, using a Moria microkeratome with a calibrated head (either reusable or single-use).



A "S" marker can be used to mark a "S" on the stromal side of the donor button.



### Lamellar trephination



The residual posterior portion of the donor cornea is then transferred, endothelial side up:

- to the Moria Hanna Punch Block #17169.

OR



- to the Moria One® Disposable Corneal Vacuum punch #17200 (several diameters available).

The designs of both punches guarantee excellent centration.

## Patient Preparation

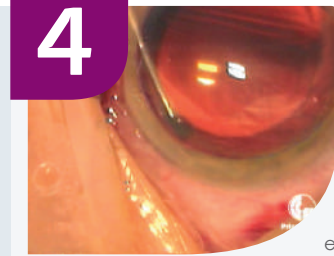


### Marking



The recipient cornea is marked with a Moria Marker #19095 (3 diameters available):

- 8.00mm
- 8.50mm
- 9.00mm



### Descemet's membrane scoring



The area of planned Descemet's removal is then outlined with a Moria reusable Price Hook #19091 or the Single-Use Price Hook #17302.

The Moria chamber maintainer #19092 is inserted into anterior chamber for continuous infusion during the stripping and removal of Descemet's membrane.



## Donor Lamellar Insertion "Pull-through" technique & positioning



### Descemet's membrane stripping

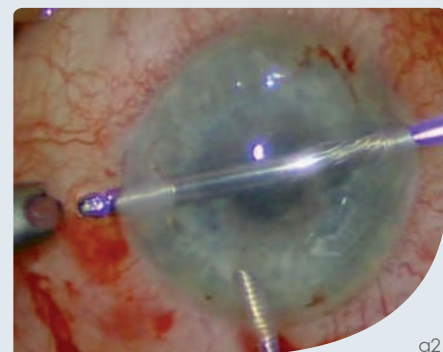


The outlined Descemet's membrane is stripped off using one of the Moria Strippers.

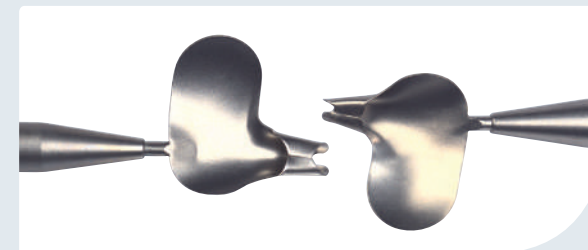
- Reusable irrigating 90° Spatula #19083/B
- Reusable non-irrigating 90° Spatula #19077/B
- Single-Use Stripper 90° angled tip #17303



g1



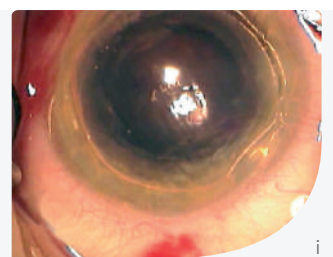
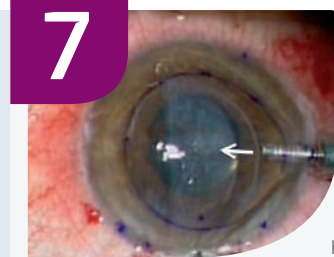
g2



The Moria reusable Busin Spatula #20006, Mini Busin Spatula #20007 or the Single-Use Busin Spatula #17300 is loaded with the donor lamella, endothelial side up.



The Busin Forceps 20G #20004 or 23G (either reusable #20011 or single-use #17301) is inserted into the spatula up to the slot to grasp the donor button. The donor lamella is then pulled into the spatula opening. Once the spatula is inverted and duly positioned, the donor lamella is pulled into the anterior chamber. It is then left to unfold spontaneously.



### Donor lamellar adherence

Once the donor tissue is well centered, an air bubble is injected to press the donor tissue up against the patient's cornea.

The air is then removed at the slit lamp to avoid a pupillary block.

# Moria Products For Lamellar Keratoplasty:



**Schapira Speculum**  
#18195



**Marker**  
#19095  
8.00 mm / 8.50 mm / 9.00 mm



**"S" Marker**  
#19096



**Price Hook**  
#19091



**One® Single-Use Price Hook**  
#17302



**Chamber Maintainer**  
#19092



**90° Spatula**  
#19077/B  
(or irrigating version also available  
#19083/B)



**One® Single-Use 90° Stripper**  
#17303



**Busin Spatula**  
#20006



**Mini Busin Spatula**  
#20007



**One® Single-Use Busin Spatula**  
#17300



**Busin Forceps, 20G**  
#20004



**Busin Forceps, 23G**  
#20011



**One® Single-Use Busin Forceps, 23G**  
#17301



**One Use Large-Cut Heads for artificial chamber**  
#19184/xxx



**CB Single-Use Heads for artificial chamber**  
#19178/xxx



**Artificial Chamber with guide ring**



**One® Single-Use Artificial Chamber with guide ring**



**One® Single-Use Corneal Vacuum Punch**  
#17200Dxxx



**Hanna Punch Block**  
#17169



**Infusion Tubing Set**  
#19181

Pictures a, e, f: courtesy of Francis W. Price, M.D. (Indianapolis, IN)  
Picture d: courtesy of Mark S. Gorovoy, M.D. (Fort Myers, FL)  
Pictures b, g, h: courtesy of Massimo Busin, M.D. (Forli, Italy)  
Picture i: courtesy of John D. Goosey, M.D. (Houston, TX)

## To obtain more information



### MORIA SA

15, rue Georges Besse  
92160 Antony  
FRANCE  
Phone: +33 (0) 1 46 74 46 74  
Fax: +33 (0) 1 46 74 46 70  
[www.moria-surgical.com](http://www.moria-surgical.com)

### MORIA JAPAN KK

Inami Bldg. 6F  
3-24-2 Hongo Bunkyo-ku  
Tokyo 113-0033  
JAPAN  
Phone: +81 3 5842 6761  
Fax: +81 3 5842 6762  
[www.moriajapan.com](http://www.moriajapan.com)

### Moria Shanghai Office

RM4, 10 FL, Kai Li Building  
N°432 Huai Hai West Road  
200052 Shanghai  
CHINA  
Phone: +86 21 5258 5068  
Fax: +86 21 5258 5067  
[www.moria-surgical.com.cn](http://www.moria-surgical.com.cn)



**Moria**  
Leading Innovations in Ophthalmology